



Sugar Land Fire & EMS

Division of
Emergency Management



www.sugarlandresponds.com

Patrick Hughes, Assistant Fire Chief/EMC



National Incident Management System

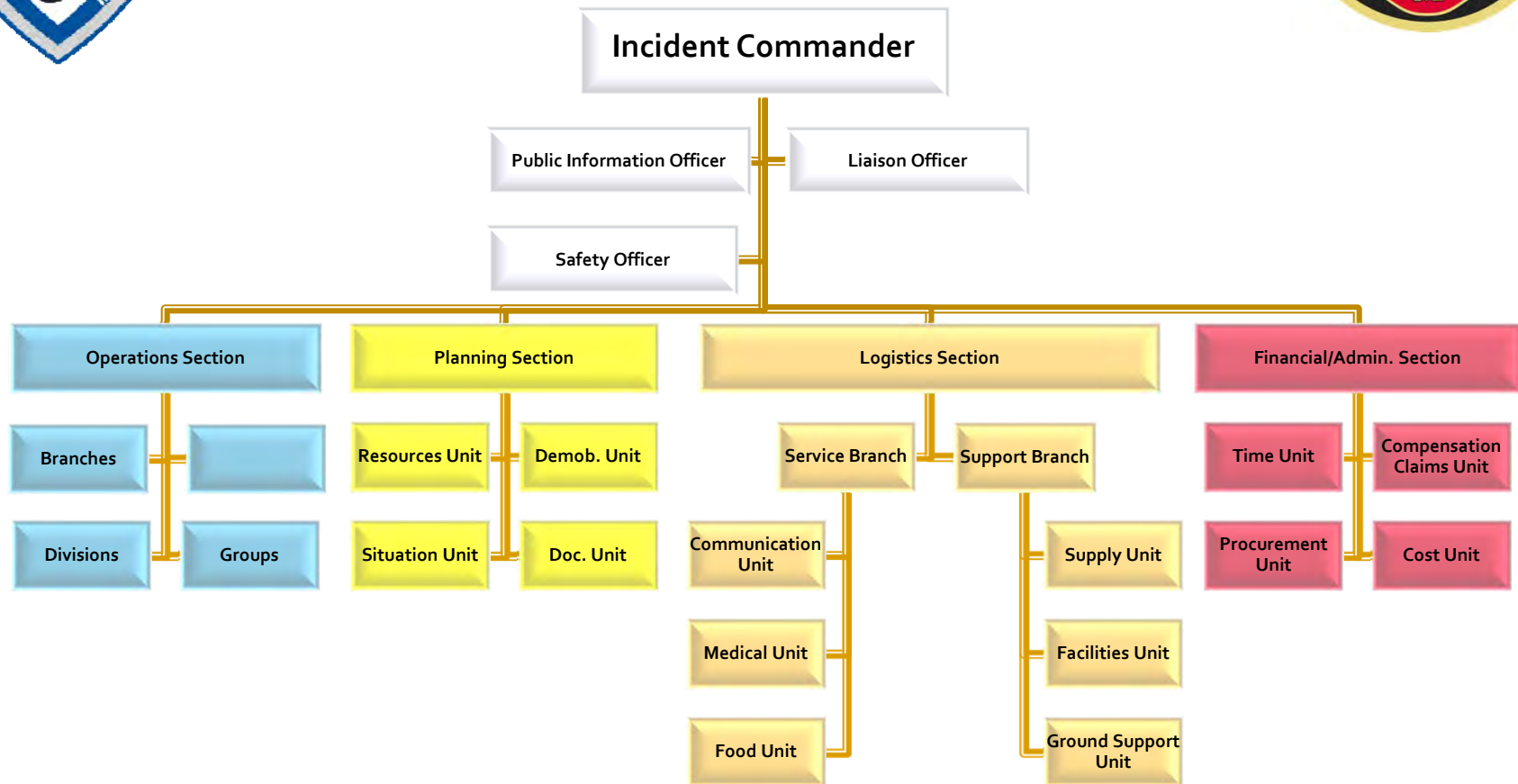
NIMS



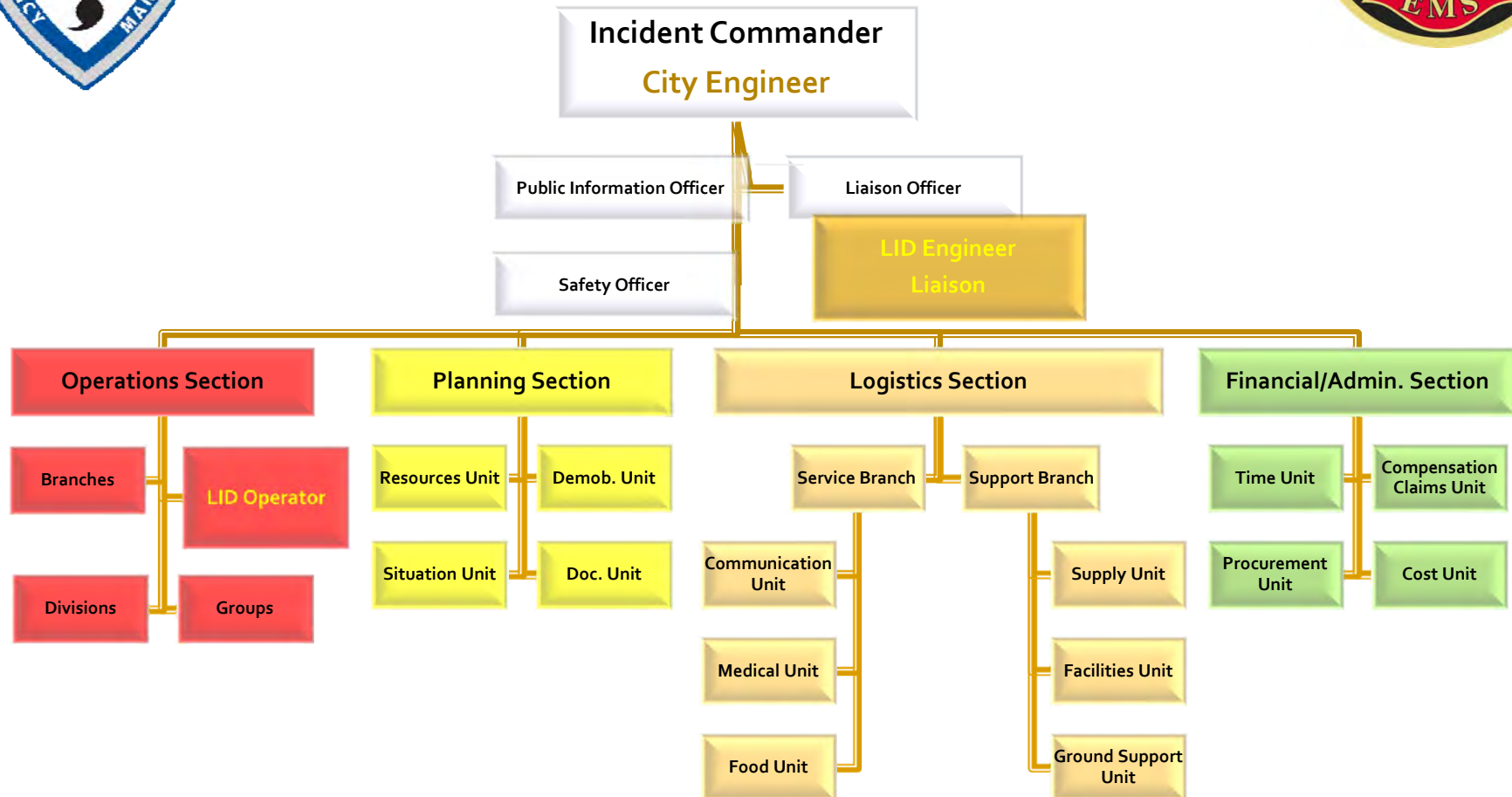
- Incident Command System (ICS)
- Common Terminology
- Span of Control
- Reliance on Incident Action Plan (IAP)



Sugar Land's Incident Command System



Incident Command System With LID Participation



Sugar Land's Role In a Flooding Emergency



- 1st Priority...Life & Safety
- 2nd Priority...Returning the City to a Normal Operating Condition
- 3rd Priority... Property & Business Preservation



LID'S ROLE



As Identified by the City of Sugar Land:

- Operate, Maintain, Repair and Improve Land within its Boundaries
- Maintain any Facilities, Plants, Works, Equipment or Appliances within its Boundaries
- Cooperate with Local Government to Insure the Safety & Wellbeing of the Surrounding Community
- Each LID May Have Additional Roles & Responsibilities Not Listed Here



LID'S WITHIN SUGAR LAND & EXTRA TERRITORIAL JURISDICTIONS (ETJ's)



- First Colony LID 1
- First Colony Lid 2
- Ft. Bend LID 2
- Ft. Bend LID 7*
- Ft. Bend LID 10
- Ft. Bend LID 11*
- Ft. Bend LID 14
- Ft. Bend LID 15*
- Ft. Bend LID 17

* Located in ETJ



SUGAR LAND READINESS LEVELS



- **Readiness Level 4 - Normal Conditions**
- **Readiness Level 3 - Increased Readiness**
- **Readiness Level 2 - High Readiness**
- **Readiness Level 1 - Maximum Readiness.**



EMERGENCY DETECTION



Patrolling of the levees is to begin and continue at elevations identified within each Emergency Action Plan for each LID

Throughout the course of flood events, the levee systems shall be constantly patrolled in order to locate possible problems such as:

- Sand Boils
- Sloughing
- Slides
- Scour
- Erosion
- Potential Overtopping

Each LID is involved in the communication loop with the City and County



EMERGENCY LEVEL EVALUATION /CLASSIFICATION



- The City of Sugar Land Engineering Department is responsible for classifying an event into one of the following three emergency levels:
- **Emergency Level 3-Non-Failure Concern**
- **Emergency Level 2-Potential Failure Concern**
- **Emergency Level 1-URGENT – Levee Failure Imminent**



THANK YOU FOR YOUR KIND ATTENTION,
ARE THERE ANY QUESTIONS?